

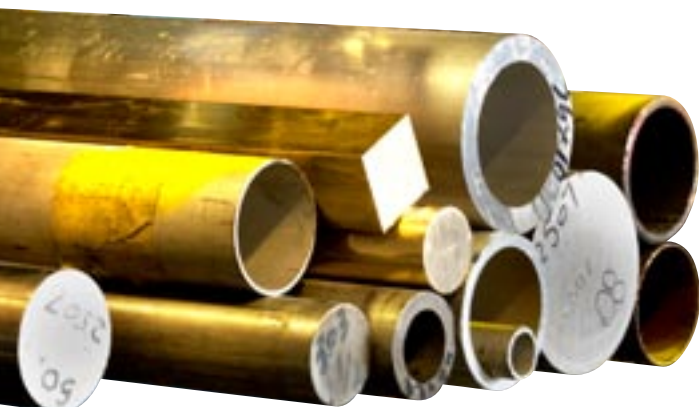


## OPTICAL EMISSION SPECTROMETRY

APCO Engineering has installed a

### **Spectromaxx Solid Metal Spectrometer**

to provide in-house control of its molten foundry metal. APCO Engineering is now able to offer a fast, cost effective analytical service to the Tasmanian engineering and manufacturing industries to meet today's need for improved quality control and documentation. The unit is equipped to analyse most commercially available metals including copper, iron, nickel, cobalt and aluminium base alloys. Additional metal profiles can be added if required.



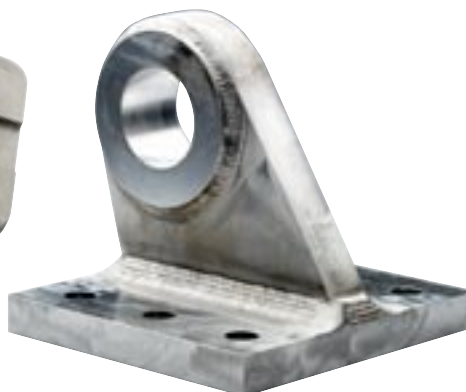


**APCO Engineering can now provide a fast and accurate metal analysis for:**

- independent verification of certificates of analysis for critical applications.
- verification of metal grade for quality assurance purposes.
- analysis of damaged or worn cast, fabricated or machined parts to guide selection of materials for local production of parts or to achieve improved performance of parts.
- analysis to assist with development of welding procedures for fabrication and repair of components produced from unknown metals.
- analysis of metal parts to assist with selection of appropriate heat treatment procedures.
- grade identification of unidentified metal stock.
- analysis of metal to assist with failure investigation reporting.
- analysis and identification of high value scrap metal to facilitate higher levels of local recycling and higher returns.
- precasting analysis and "in furnace" correction of molten foundry metal.
- post casting verification of foundry casting metal.



**To discuss your specific requirements please call:**



**APCO Engineering Pty Ltd**

ABN: 27 009 491 909

14 Bender Drive

Derwent Park 7009

Tasmania AUSTRALIA

**Tel: +61 3 6272 8344**

**Fax: +61 3 6272 4983**

Email: [admin@apcoengineering.com](mailto:admin@apcoengineering.com)

Web: [www.apcoengineering.com](http://www.apcoengineering.com)